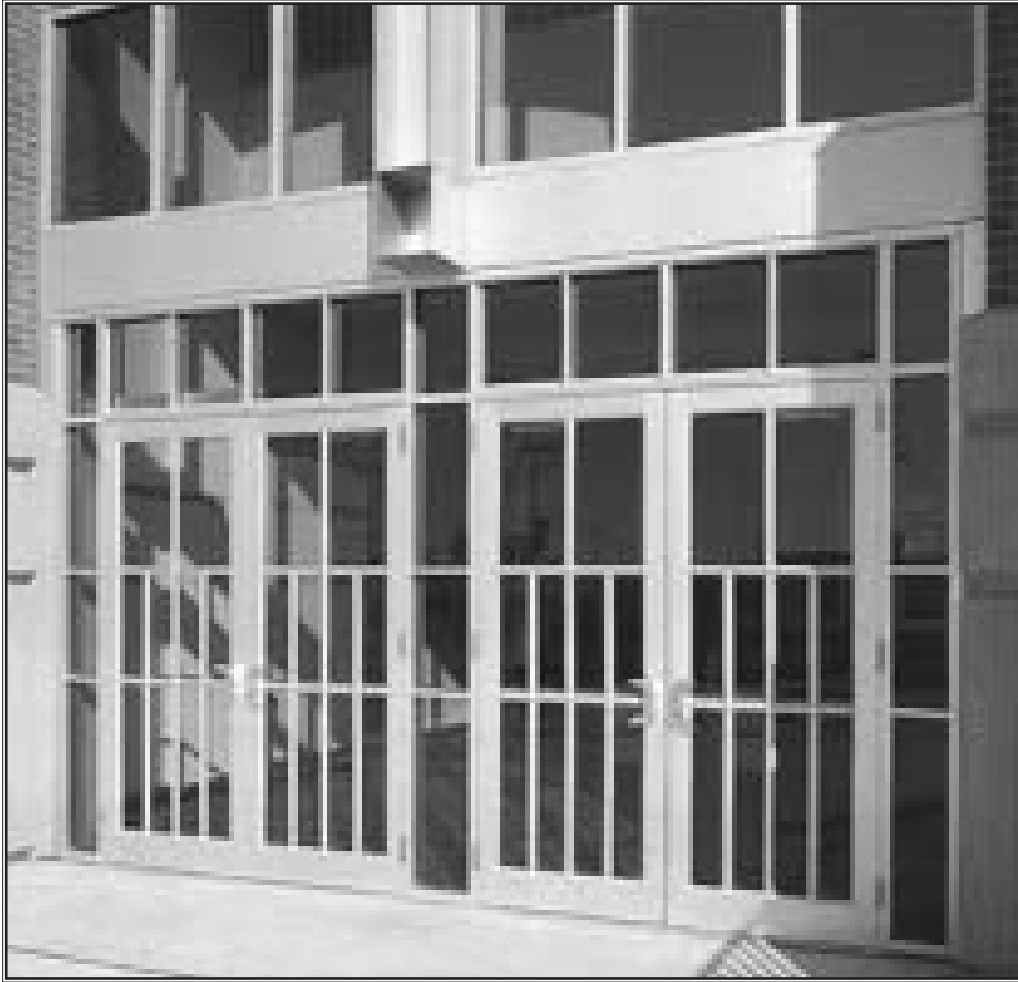


# 350 Heavy Wall™ Entrances by **Kawneer**



### ***Designed for durability in heavy traffic areas***

- ◆ Medium Stile Door designed for high traffic applications such as schools, universities and office buildings
- ◆ Door and frame have  $\frac{3}{16}$ " walls throughout for additional durability and strength
- ◆ The door is 2" deep with  $3\frac{1}{2}$ " vertical stiles and  $6\frac{1}{2}$ " bottom rail
- ◆ Accepts glazing infills from  $\frac{1}{4}$ " to 1"
- ◆ Incorporates Kawneer's standard Dual Moment welded corner design

FOR PRICING CALL **Romco**

SINCE 1937

**Romco Sales Co.**

SUBJECT TO CHANGE WITHOUT NOTICE

TEL 718-583-7100 ◆ 416 EAST 174th STREET, BRONX, NEW YORK 10457 ◆ FAX 718-731-1152